

Welcome to Year 4

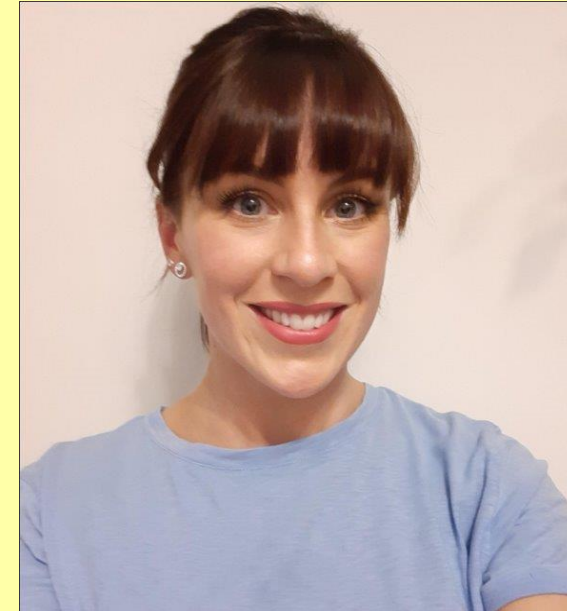
Meet the Teacher

Teachers and Teaching Assistants

The Year 4 teachers are



Mrs Chembalipuram



Miss Butler

Also within Year 4 Miss Farmer

Year 4 Teaching Team



3NS will be 4C Turning Class

3C will be 4B Anning Class

4B class is named after...



Mary Anning

Born May 21st, 1799, and died on March 9th, 1847

What do you already know about this person?

Mary Anning is famous for being a pioneering fossil hunter and self-taught paleontologist whose discoveries in the early 19th century transformed our understanding of prehistoric life.

4C class is named after...



Alan Turing

Born June 23, 1912, and died on June 7, 1954

What do you already know about this person?

Alan Turing was an English man who was very good at maths, science, and solving tricky problems. He helped create ideas for computers and robots, and many people say he was one of the first people to imagine how computers could work.

Attendance

It is essential to be in as much as possible to maximise learning and give children the best chances at success and integration. As our attendance policy quotes:

Staplehurst School is committed to the continuous raising of achievement of all of our pupils. Regular attendance is critical if our pupils are to be successful and benefit from the opportunities presented to them.

One of our basic principles is to celebrate success. Good attendance is fundamental to a successful and fulfilling school experience. Staplehurst School actively promotes 100% attendance for all of our pupils and we use a variety of weekly, termly and annual awards, to promote good attendance and punctuality.

- ▶ Term starts (for children) on **Wednesday 3rd September**.
- ▶ Drop off between 8:35 – 8:45am.
- ▶ Learning starts from 8.35am, children should be in class at this time ready to begin.

Our Vision

Children come first; they are our future

- We build strong **positive** relationships and trust; as a highly inclusive school we celebrate individuality and promote well-being through **excellent** pastoral provision.
- We promote a thirst for knowledge and a love of learning by teaching an ambitious knowledge rich curriculum that inspires curiosity and is relevant for our community.
- We empower all children through our high expectations to be tolerant, respectful, **determined** and **independent** active members of a diverse local, national and global community.
- We encourage all children to achieve in all areas so that they can reach their potential.

Expectations at Staplehurst

At Staplehurst School, we demonstrate...

- ▶ **Positivity**

- ▶ A positive attitude to school and learning; Being kind and supportive to each other.

- ▶ **Respect**

- ▶ Showing respect to adults and each other; Being polite and well behaved in the classroom and around school.

- ▶ **Independence**

- ▶ Being independent and motivated with learning.

- ▶ **Determination**

- ▶ Being determined and resilient learners; 100% effort at all times.

- ▶ **Excellence**

- ▶ Setting a good example to the rest of the school; Demonstrating excellence in behaviour, attitude and learning.

Expectations at Staplehurst

Rewards

- ▶ Verbal praise
- ▶ PRIDE Points & PRIDE Rewards
 - ▶ Reward equipment at playtime
 - ▶ Non-uniform days - house PRIDE winners
- ▶ Certificates in Celebration Assembly
- ▶ Prizes e.g. Books for 30 reads, Attendance

Expectations at Staplehurst

Behaviour Policy

Whilst our approach is always restorative and preemptive, when we do encounter behaviour that doesn't meet the high-expectations we have, behaviour is banded according to our policy and the following measures/procedures are considered:

- ▶ Teachers will put names on the board and ticks next to them to offer children chances to correct behaviour before escalation.
- ▶ Reflections (a restorative lunchtime session where the child spends time with a senior leader, completing a restorative activity to help reflect on behaviour, followed up with a reconnecting conversation with the adult.
- ▶ Repeated reflections (x3 in one term) will result in a meeting with the headteacher and parents/carers.
- ▶ Any behaviour of low-level will be communicated by the class teacher to parents and carers at the end of the day. This is to support everyone in moving the behaviour forward positively.

School uniform, PE Kit and other equipment.

- ▶ Winter uniform as per policy. One pair of stud earrings only. Bows in navy or school yellow and no bigger than the palm of your child's hand. Hair below shoulders needs to be tied back.
- ▶ Blue P.E. t-shirt, blue or black shorts and sweatshirt/jogging bottoms when cold, plimsolls/trainers.
- ▶ If your child is unable to take part in P.E, please send in a note/email to explain why. Repeated missing kit will result in reflection.

What will we be learning this year?

- T1) Ancient Civilisations? (History)
- T2) Rivers (Geography)
- T3) Ancient Egyptian Civilisation? (History)
- T4) Rainforest (Geography)
- T5) Anglo-Saxons and Vikings (History)
- T6) South East England? (Geography)
- Extra curriculum themed weeks



Planned Trips and Visits

- T2 - Science Workshop - The water cycle
- T3 - British Museum, London
- T4 - Rainforest Animals Workshop
- T6 - Fieldwork around the village,
Tunbridge Wells Mosque
Staplehurst Cricket Club

Quality-First Teaching

Our teaching and learning policy captures our approach to how children at Staplehurst learn:

Staplehurst is a school that is happy, purposeful and stimulating where each child's needs are viewed individually, by a staff of highly trained classroom practitioners who demonstrate excellence underpinned by high expectations and professionalism.

Our aim is to instil, in each unique pupil, a love of learning; develop their confidence in order to reach their full potential; and, underpinned by a body of powerful knowledge, cultivate the lifelong skills of independence, creative thinking, team work and effective participation.

We consider ourselves to be a knowledge-rich school, whereby children master a body of subject-specific knowledge defined by the school. Skills are generally an outcome of our curriculum, not its purpose. At Staplehurst, we emphasise big ideas and invaluable knowledge that we want our children to acquire.

- ▶ Same-Day Intervention
- ▶ Formative assessment
- ▶ Retrieval Practice
- ▶ Effective use of feedback
- ▶ Quality first teaching
- ▶ Precision teaching

Ways to help your child at home

- ▶ Ensure your child arrives at school on time every day.
- ▶ Encouraging regular reading
- ▶ Times tables/Number bonds practice (TT Rockstars/Numbots)
- ▶ Ensuring homework is completed and handed in on time
- ▶ Learning the spellings sent home.
- ▶ Visiting the library to research topics or supporting children to find information online.
- ▶ Visiting places of interest

Homework

- ▶ One piece of Maths & English every week.
- ▶ 30 minutes a week.
- ▶ Focus on consolidation of key concepts taught. Homework should not be overly challenging with the intention to offer opportunity to practice, increase confidence and boost speed/stamina of working.
- ▶ To be handed out on a Friday and handed back in by Tuesday. Completion will be expected.
- ▶ Children need to be reading every night, practice phonics and any red words/common exception words, practise number bonds/times tables (including division facts).
- ▶ All pupils will have logins for Times Table Rockstars/Numbots.
- ▶ Please remember to fill in the reading record (PRIDE Points are given). Pupils can aim for 30 reads rewards.

Reading

- ▶ Reading should be recorded in contact books every day. Contact books will be checked regularly and are expected to be in school every day.
- ▶ Reading every day at home is one of the most important ways you can support your child's learning. Regular reading not only builds fluency and vocabulary, but also strengthens imagination, comprehension, and confidence across all areas of the curriculum.
- ▶ Children have daily reading lessons in school. Fluency and Extended read sessions build fluency, vocabulary and prosody (reading with expression and relevant speed). Close read sessions develop a deeper understanding and analysis of the text.

School Library

- ▶ Each group will visit the library fortnightly
- ▶ We encourage the children to use this time to read for pleasure
- ▶ Pupils will bring at least one 'reading for pleasure' book home from the library
- ▶ They must return one before being able to sign out a new book
- ▶ You will also be able to visit the library with your child after school
- ▶ Library times are:
Tuesday and Thursday 3.30pm-4.00pm

Statutory Assessment – MTC

- ▶ This year the Year 4 MTC (Multiplication Tables Check) will run from Monday 1st June to Friday 12th June.
- ▶ The MTC is an online check to determine whether pupils can recall their times tables facts up to 12×12 . Further information about the MTC will be shared during a parent meeting in Term 1.

Communication

We value open communication between home and school and encourage you to share any information that helps us support your child.

Messages and Non-Urgent Updates

- ▶ Parents can share non-urgent messages or minor updates at the end of the school day with the class teacher or via your child's year group email.
- ▶ If you would like a longer conversation with your child's teacher, please arrange a meeting in advance. This allows us to give you the time and attention needed at a mutually convenient time.
- ▶ Parents' Evenings are held twice a year to discuss your child's progress and learning in more detail.

Urgent Messages and Absence

- ▶ Urgent information, such as changes to collection or emergency updates, should be communicated directly to the school office by telephone: 01580 891765.
- ▶ To report a child's absence, please email: attendance@staplehurst.kent.sch.uk. You may also phone the school if necessary.
- ▶ All medical information or requests (e.g. medication, appointments) must go through the school office to ensure all relevant staff are informed.

Communication

Key information

- ▶ The school office is open from 8:30am to 4:00pm during term time.
- ▶ Key information about the school, including term dates, curriculum details, policies, events, and announcements, is available on our website.
- ▶ Our weekly newsletter is shared via SCOPAY and published on the school website.

Complaints Procedure

- ▶ If you have a concern, we encourage you to speak first with your child's class teacher. If the issue is not resolved, please contact the phase leader or deputy headteacher to arrange a meeting.
- ▶ Should the matter remain unresolved, you may contact the headteacher. If you are still dissatisfied, the school's Complaints Policy, available on our website, outlines the formal procedure to follow.

Key Events and Enrichment

- ▶ High quality, engaging learning experiences every day
- ▶ Outdoor learning days
- ▶ Themed weeks (STEM Week, Keeping Healthy Week)
- ▶ Art and D.T. Days
- ▶ Trips and visits
- ▶ Christmas Carol Concert
- ▶ Sports Day
- ▶ Class Assembly

FAQs other Questions

- ▶ Home-School Agreement
- ▶ Lunches all through SCOPAY
- ▶ Year group email: Year4@Staplehurst.kent.sch.uk