

Welcome

Meet the Teacher

Year 5





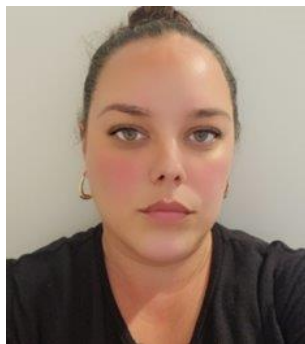
Year 5 Teaching Team



Miss Butler



Mrs Turner



Mrs James

Miss Strange



Year 5 Classes

5B will be Kwabs Class



5T will be Reni Eddo-Lodge Class

School timings

- ▶ Attendance: It is essential to be in as much as possible to maximise learning and give children the best chances at success and integration. As our attendance policy quotes:

Staplehurst School is committed to the continuous raising of achievement of all of our pupils. Regular attendance is critical if our pupils are to be successful and benefit from the opportunities presented to them.

One of our basic principles is to celebrate success. Good attendance is fundamental to a successful and fulfilling school experience. Staplehurst School actively promotes 100% attendance for all of our pupils and we use a variety of weekly, termly and annual awards, to promote good attendance and punctuality.

- ▶ Term starts (for children) on **Tuesday 2nd September**.
- ▶ Drop off as normal 8:35 - 8:45am through gate.
- ▶ Learning starts 8.35am, children should be in class at this time ready to begin.
- ▶ Pick up - Gate opens at 3:10pm. Classroom dismissal = 3:15pm via the external classroom doors.

Children come first; they are our future

- We build strong **positive** relationships and trust; as a highly inclusive school we celebrate individuality and promote well-being through **excellent** pastoral provision.
- We promote a thirst for knowledge and a love of learning by teaching an ambitious knowledge rich curriculum that inspires curiosity and is relevant for our community.
- We empower all children through our high expectations to be tolerant, respectful, **determined** and **independent** active members of a diverse local, national and global community.
- We encourage all children to achieve in all areas so that they can reach their potential.



Expectations at Staplehurst

At Staplehurst School, we show...



STAPLEHURST
SCHOOL

▶ Positivity

- ▶ A positive attitude to school and learning.
- ▶ Being kind and supportive to each other.

▶ Respect

- ▶ Showing respect to adults and each other.
- ▶ Being polite and well behaved in the classroom and around school.

▶ Independence

- ▶ Being independent and motivated with learning.

▶ Determination

- ▶ Being determined and resilient learners.
- ▶ 100% effort at all times.

▶ Excellence

- ▶ Setting a good example to the rest of the school.
- ▶ Demonstrating excellence in behaviour, attitude and learning.



Rewarding pupils showing our PRIDE Values



STAPLEHURST
SCHOOL

- ▶ PRIDE Points & PRIDE Rewards
- ▶ Verbal praise
- ▶ Certificates in Celebration Assembly
- ▶ Reward equipment at playtime
- ▶ Prizes e.g. Books for 30 reads
- ▶ Non-uniform days - house PRIDE winners

*focus on the
good*



When behaviour does not meet standards



As per our policy, we band behaviour accordingly. Whilst our approach is always restorative and preemptive, when we do encounter behaviour that doesn't meet the high-expectations we have, the following measures/procedures are considered:

- ▶ Teachers will put names on the board and ticks next to them to offer children chances to correct behaviour before escalation.
- ▶ Reflections (a restorative lunchtime session where the child spends time with a senior leader, completing a restorative activity to help reflect on behaviour, followed up with a reconnecting conversation with the adult.
- ▶ Repeated reflections (x3 in one term) will result in a meeting with the headteacher and parents/carers.
- ▶ Any behaviour of low-level will be communicated by the class teacher to parents and carers at the end of the day. This is to support everyone in moving the behaviour forward positively.

BAND 1	BAND 2	BAND 3	BAND 4
Talking or mess eating. Interfering teacher or adult. Assaulting staff. Wasting time. Assaulting other pupils/ harming opportunities. Cheating etc. Involuntarily swearing. Making inappropriate remarks. Talking when you are supposed to be listening. Not following class rules. Coffing out. Wandering about classrooms. Running in the school building. Not leaving hand out to help. Interfering other pupils. Wasting other's instructions. Silly noises/Minor Antagonism. Pushing or shoving. Talking during silent work. Minor Playground incidents. Wasting of resources/time taken. Bringing in toys, trading aids etc.	Repeat of band 1 behaviour. Sitting on the floor. Using swear words deliberately. Arguing with adults. Abuse of school or other people's property. Throwing objects in anger. Bullying to adults. Lying. Persistent refusal to follow instructions. Allowing others to access the school network by other means. Attempting to access the school network using another pupil's account. Conspiring or deliberately disabling the data of other users. Accidentally accessing offensive or pornographic material and failing to report the incident.	Repeat of band 2 behaviour. Conspicuous disruptive behaviour. Verbal abuse of staff. Spitting in someone. Deliberately hitting, kicking or striking another person. Fighting. Swearing at staff or pupils. Racial or homophobic abuse. Persistent bullying. Running out of class without schoolbuilding. Being. Stealing other people's property. Sending an email, text or message that is regarded as offensive, harassment or of a hostile or abusive nature. Deliberate actions that could bring the school into disrepute or break the integrity of the website of the school. Using games sites or other means to subvert the school's filtering systems. Deliberately accessing offensive or pornographic material. Bringing into school possession of a prohibited item. Knowledge not using a transmission of material that infringes the copyright of another person contravenes the Data Protection Act. Deliberately accessing or trying to access material that could be considered illegal. Continued infringement of the safety policy, following band 2 or band 3 arrangements. Harass and safety of individual child, other children or staff in an area.	Repeat of band 3 behaviour. Violent aggression behaviour, e.g. throwing furniture, hitting other people, hitting or punching another child or member of staff. Leaving the school site. Stealing school property. Repeatedly opening the classroom without permission (lockdowning). Fighting in the classroom. Minor verbal playground incidents, fighting. Serious fighting & intentional physical harm to other children. Threatening to use dangerous objects. Serious challenge to authority. Verbal abuse/insults to any staff or parent/guardian. Bringing into school possession of a prohibited item, use of social media and technology (texting/whatsapp). Stealing. Persistent bullying. Racial incidents. Truancy. Bringing into school possession a prohibited item. Malicious or inappropriate use of new technologies (use this available use of them in school).
Sanction The child will be given a verbal warning. The adult will write the child's name on the board at the end of the day. The adult will give a tick against the child's name - the child will lose five minutes from their next break. Made up will be recorded on CPOMS.	Sanction The child will be given a verbal warning. The adult will write the child's name on the board at the end of the day. The adult will give a tick against the child's name - the child will lose five minutes from their next break. Made up will be recorded on CPOMS.	Sanction The child will be given a verbal warning. The adult will write the child's name on the board at the end of the day. The adult will give a tick against the child's name - the child will lose five minutes from their next break. Made up will be recorded on CPOMS.	Sanction The child will be given a verbal warning. The adult will write the child's name on the board at the end of the day. The adult will give a tick against the child's name - the child will lose five minutes from their next break. Made up will be recorded on CPOMS.



Reading



- ▶ Reading should be recorded in contact books daily. Contact books will be checked weekly. Pupils aim for 30 reads rewards.
- ▶ Messages should go via the year group email, or urgent messages e.g. pickup or appointments via the office.
- ▶ All medical requests need to go via the school office to ensure all are informed.
- ▶ Daily reading lessons. Fluency and Extended read sessions build fluency, vocabulary and prosody (reading with expression and relevant speed). Close read sessions develop analysis of the text.



School uniform, PE Kit and other equipment.

Winter uniform.

- ▶ Winter uniform as per policy. One pair of stud earrings only. Bows in navy or school yellow and no bigger than the palm of your child's hand. Hair below shoulders needs to be tied back.
- ▶ Blue P.E. t-shirt, blue or black shorts, plimsolls/trainers
Tracksuits or sweatshirts (blue or black) may be worn when cold. No leggings. Sweatshirts should not have a hood. Hair must be tied back, and no jewellery should be worn.
- ▶ If your child is unable to take part in P.E, please send in a note/email to explain why. Repeated missing kit will result in reflection.



What will we be learning about this year?

A broad and balanced curriculum.

- Science focus:
- Earth and Space, Materials and their Properties, Living Things
- History focus:
- What influences did Ancient Greece have on today's society?
- Which medical discovery or innovation was the most important?
- How did the Industrial Revolution help change British society?
- Geography focus:
- How is the world mapped?
- How does land use differ across the UK?
- What impact do volcanoes, earthquakes and mountains have on human life?
- Curriculum themed weeks STEM Week, Keeping Healthy Week

Trips and Enrichment:

We endeavour to for each year group to participate in an enrichment workshop, a local trip and a wider trip (for example London), all linked to our curriculum. More information about the trips will be shared early next year.





Quality-First Teaching

Our teaching and learning policy captures our approach to how children at Staplehurst learn:

Staplehurst is a school that is happy, purposeful and stimulating where each child's needs are viewed individually, by a staff of highly trained classroom practitioners who demonstrate excellence underpinned by high expectations and professionalism.

Our aim is to instil, in each unique pupil, a love of learning; develop their confidence in order to reach their full potential; and, underpinned by a body of powerful knowledge, cultivate the lifelong skills of independence, creative thinking, team work and effective participation.

We consider ourselves to be a knowledge-rich school, whereby children master a body of subject-specific knowledge defined by the school. Skills are generally an outcome of our curriculum, not its purpose. At Staplehurst, we emphasise big ideas and invaluable knowledge that we want our children to acquire.

- ▶ Same-Day Intervention
- ▶ Formative assessment
- ▶ Retrieval Practice
- ▶ Effective use of feedback
- ▶ Quality first teaching
- ▶ Precision teaching



Homework

- ▶ One piece of Maths & Spelling/SPAG every week.
- ▶ 30 minutes a week.
- ▶ Focus on consolidation of key concepts taught. Homework should not be overly challenging with the intention to offer opportunity to practice, increase confidence and boost speed/stamina of working.
- ▶ To be handed out on a Friday and handed back in by Tuesday. Completion will be expected.
- ▶ Children also need to be reading every night, and practise times tables (including division facts).
- ▶ Please remember to fill in the reading record (PRIDE Points are given). Pupils can aim for 30 reads rewards.



Ways to help your child at home

- ▶ Helping to ensure your child arrives at school on time every day.
- ▶ Regular reading (aim for 30 reads).
- ▶ Times tables practice. (TT Rockstars)
- ▶ Ensuring homework is completed and handed in on time, and when completing internet research, aiding children in finding key points.
- ▶ Learning the spellings sent home.
- ▶ Visiting the library to research topics.
- ▶ Visiting places of interest
- ▶ Support pupils with holiday learning tasks.



School Library

- ▶ Each group will visit the library weekly
- ▶ We encourage the children to use this time to read for pleasure
- ▶ They are allowed to bring one 'read for pleasure' book home from the library
- ▶ They must return it on the following visit to be able to sign out a new book

- ▶ You will also be able to visit the library with your child after school
- ▶ Library times are:

Tuesday and Thursday 3.30pm-4.00pm

If they take a book, please sign it out in their blue year group folder



Communication



- ▶ Parents can share messages and key information (non-urgent) via the school office or at the end of the day with the class teacher.
- ▶ Updates and minor issues can be discussed at pickup.
- ▶ Should you require a meeting to discuss an issue please inform your teacher in advance and a mutually convenient time will be arranged.
- ▶ Parents' evenings are held 2 x per year to discuss your child's learning.
- ▶ Key information about the school is posted on our website, including: the weekly newsletter; school times and term dates; events and announcements; curriculum information and policies and procedures.
- ▶ The newsletter is published weekly and sent to parent weekly via SCOPAY and published on our website by 12 noon on Monday during term time.
- ▶ Please telephone us to communicate brief information about your child that the school needs to know in an emergency, e.g., to let us know that you will be late collecting your child. We ask parents to telephone the school on 01580 891765.
- ▶ The school office is open between 8:30am to 4:00pm, during term-time. At all other times there is an answering service available to take your message.
- ▶ Whilst email is preferable **attendance@staplehurst.kent.sch.uk**, telephone calls are appropriate to notify us that your child will be absent from school
- ▶ There are times when we feel that we would like to say something about the service or treatment that we receive. If you feel you need to complain, then please follow the procedure outlined here:
- ▶ In the first instance you should speak to your child's class teacher. If you are still dissatisfied, please contact the phase leader /or the deputy headteacher as soon as you can to make an appointment. If the matter cannot be resolved, please contact the headteacher. If you remain dissatisfied with the outcome, you should follow the school's Complaints Procedure, which is set out in the school Complaints Policy. The Complaints Policy is available on our website.



Communication Systems for Parents



Key Events



STAPLEHURST
SCHOOL

- ▶ High quality, engaging learning experiences every day
- ▶ Themed weeks (STEM Week, Keeping Healthy Week)
- ▶ Trips and visits
- ▶ **Transition**
- ▶ Christmas Carol Concert
- ▶ Sports Day
- ▶ Class Assembly



FAQs other Questions

- ▶ Home-School Agreement
- ▶ Lunches all through *SCOPAY*
- ▶ Year group email: Year5@Staplehurst.kent.sch.uk