



STAPLEHURST
SCHOOL

Welcome

Meet the Teacher

Year 3



Children come first; they are our future

- We build strong **positive** relationships and trust; as a highly inclusive school we celebrate individuality and promote well-being through **excellent** pastoral provision.
- We promote a thirst for knowledge and a love of learning by teaching an ambitious knowledge rich curriculum that inspires curiosity and is relevant for our community.
- We empower all children through our high expectations to be tolerant, respectful, **determined** and **independent** active members of a diverse local, national and global community.
- We encourage all children to achieve in all areas so that they can reach their potential.



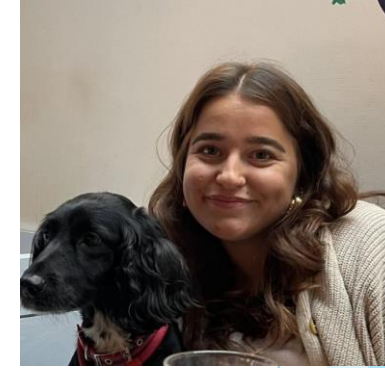
Year 3 Teaching Team



Mrs. Wye



Mrs. Foreman/ Mrs. Slow



Miss. Knight

3W will be Kaneh Mason class



3K will be Lea Anderson class

3FS will be Onjali Q Rauf class



School timings

- ▶ **Attendance:** It is essential to be in school as much as possible to maximise learning and give children the best chances at success and integration. As our attendance policy quotes:

Staplehurst School is committed to the continuous raising of achievement of all of our pupils. Regular attendance is critical if our pupils are to be successful and benefit from the opportunities presented to them.

One of our basic principles is to celebrate success. Good attendance is fundamental to a successful and fulfilling school experience. Staplehurst School actively promotes 100% attendance for all of our pupils and we use a variety of weekly, termly and annual awards, to promote good attendance and punctuality.

- ▶ Term starts (for children) on Wednesday 3rd September.
- ▶ Learning starts 8.50, children should be in class at this time ready to begin.
- ▶ Pick up is from 3:15 via the external classroom doors.

Inset Days

- ▶ Monday 1st and Tuesday 2nd September 2025 (children return on Wednesday 3rd)
- ▶ Friday 26th September 2025
- ▶ Friday 17th October 2025
- ▶ Friday 23rd January 2026



Expectations for September

At Staplehurst School, we show...

► Positivity

- A positive attitude to school and learning.
- Being kind and supportive to each other.

► Respect

- Showing respect to adults and each other.
- Being polite and well behaved in the classroom and around school.

► Independence

- Being independent and motivated with learning.

► Determination

- Being determined and resilient learners.
- 100% effort at all times.

► Excellence

- Setting a good example to the rest of the school.
- Demonstrating excellence in behaviour, attitude and learning.



Behaviour and Expectations

- ▶ PRIDE Points & PRIDE Rewards
- ▶ Verbal and written praise
- ▶ Certificates in Celebration Assembly
- ▶ Reward equipment at playtime
- ▶ Class Reward Systems
- ▶ Prizes e.g. Books for 30 reads



As per our policy, we band behaviour accordingly. Whilst our approach is always restorative and preemptive, when we do encounter behaviour that doesn't meet the high-expectations we have, the following measures/procedures are considered:

- ▶ Teachers will put names on the board and ticks next to them to offer children chances to correct behaviour before escalation.
- ▶ Reflections (a restorative lunchtime session where the child spends time with a senior leader, completing a restorative activity to help reflect on behaviour, followed up with a reconnecting conversation with the adult).
- ▶ Repeated reflections (x3 in one term) will result in a meeting with the headteacher and parents/carers.
- ▶ Any behaviour of low-level will be communicated by the class teacher to parents and carers at the end of the day. This is to support everyone in moving the behaviour forward positively.



Reading

- ▶ Reading records should be handed in every day, with home reading recorded in them. Pupils can aim for 30 reads rewards.
- ▶ They will be checked on Tuesdays and Fridays. Children are in charge of changing their own reading books.
- ▶ Messages should go via the year group email, or urgent messages e.g. pickup or appointments via the office, not via the reading record.
- ▶ Daily reading lessons. Fluency and Extended read sessions build fluency, vocabulary and prosody (reading with expression and relevant speed). Close read sessions develop analysis of the text in Term 6.



School uniform, PE Kit and other equipment.

- ▶ In September pupils need to return in winter uniform.
- ▶ Summer and winter uniform as per policy. One pair of stud earrings only. Bows in navy or school yellow and no bigger than the palm of your child's hand. Hair below shoulders needs to be tied back.
- ▶ Blue P.E. t-shirt, blue or black shorts, plimsolls or trainers for outside, bare feet or plimsolls for inside.
- ▶ Tracksuits or sweatshirts (blue or black) may be worn when cold. No leggings. Sweatshirts should not have a hood. Hair must be tied back, and no jewellery should be worn.
- ▶ If your child is unable to take part in P.E, please send in a note to explain why. Repeated missing kit will result in children using the school's own kit, in order for them to access learning.



What will we be learning about this year?

A broad and balanced curriculum.

- How do Staplehurst and Tonbridge compare? (Geography focus)
- How has industry in Kent changed over time? (History focus)
- Why is the weather different in different parts of the world? (Geography focus)
- What factors affected Stone Age life and what evidence do we have of this? (History focus)
- What is Italy like and how does it compare to the UK? (Geography focus)
- How did the Romans impact British society? (History focus)
- Curriculum themed weeks (STEM Week)





Quality-First Teaching

Our teaching and learning policy captures our approach to how children at Staplehurst learn:

Staplehurst is a school that is happy, purposeful and stimulating where each child's needs are viewed individually, by a staff of highly trained classroom practitioners who demonstrate excellence underpinned by high expectations and professionalism.

Our aim is to instil, in each unique pupil, a love of learning; develop their confidence in order to reach their full potential; and, underpinned by a body of powerful knowledge, cultivate the lifelong skills of independence, creative thinking, team work and effective participation.

We consider ourselves to be a knowledge-rich school, whereby children master a body of subject-specific knowledge defined by the school. Skills are generally an outcome of our curriculum, not its purpose. At Staplehurst, we emphasise big ideas and invaluable knowledge that we want our children to acquire.

- ▶ Same-Day Intervention
- ▶ Formative assessment
- ▶ Retrieval Practice
- ▶ Effective use of feedback
- ▶ Quality first teaching
- ▶ Precision teaching

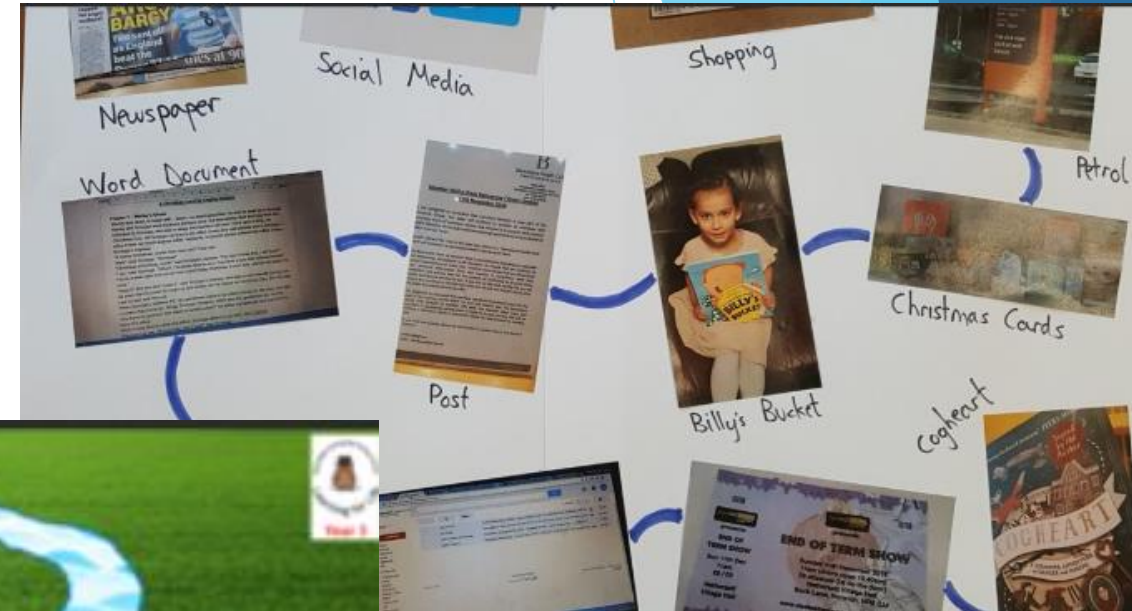


Homework

- ▶ One piece of Maths & Spelling/SPAG every week.
- ▶ 30 minutes a week.
- ▶ Focus on consolidation of key concepts taught. Homework should not be overly challenging with the intention to offer opportunity to practice, increase confidence and boost speed/stamina of working.
- ▶ To be handed out on a Friday and handed back in by Tuesday. Completion will be expected.
- ▶ Children also need to be reading every night, and practise times tables (including division facts).
- ▶ Please remember to fill in the reading record (PRIDE Points are given). Pupils can aim for 30 reads rewards.

Homework

Over the holidays homework will be a reading challenge called a Reading River. Here are some examples



Homework

Over the holidays, homework will be a reading challenge called a Reading River.

You can read whatever books you like as long as you record it on your river in some way.

To help you get started you will have an envelope filled with:

A piece of card (to make the river on), some tissue paper (to make the river) and colouring pencils. We will also give you a book to get you started.

You can read your own books, or perhaps you might want to swap the book you got from school with your friends so you can talk about the books you have all read. Perhaps you could take part in the library challenge and record those books too.

Once you read it you will be able to write, draw or stick things onto your card which will make your reading log. You can make it look however you like but don't forget to name it and bring it back in September so it can be shared in class and put up on the walls in the library.



Ways to help your child at home

- ▶ Helping to ensure your child arrives at school on time every day.
- ▶ Regular reading (aim for 30 reads).
- ▶ Times tables practice. (TT Rockstars)
- ▶ Ensuring homework is completed and handed in on time, and when completing internet research, aiding children in finding key points.
- ▶ Visiting the library to research topics.
- ▶ Visiting places of interest.
- ▶ Support pupils with holiday learning tasks.



Key Events

- ▶ High quality, engaging learning experiences every day
- ▶ Themed weeks (STEM Week, Keeping Healthy Week)
- ▶ Trips and workshops-
- ▶ September-Trip to Tonbridge (Geography)
- ▶ February- Science Workshop -Forces and Magnets
- ▶ May- Athletics Trip to Tonbridge Sports Centre
- ▶ June- Canterbury Roman Museum (History)
- ▶ 2 x outdoor learning days.
- ▶ Christmas Carol Concert

FAQs other Questions

- ▶ Year group email: year3@staplehurst.kent.sch.uk